

US-411

An Archaeological Process

LANE ADDITIONS TO SR 25 (US 411) FROM TURKEYTOWN IN ETOWAH COUNTY
TO .65 MILES NORTH OF COUNTY ROAD 20, CHEROKEE COUNTY, AL
FEDERAL-AID PROJECT NUMBER STPAA-0137(010)

The purpose and need for the project includes reducing traffic accidents, improving the highway's level of service, and providing social and economic benefits to the state, region and local communities along US 411.

The cultural resources study was completed in 1993 and only the site discussed here was recommended for additional work to determine its National Register status.

The Finding of No Significant Impact (FONSI) for the project was approved in 1994. Construction has been completed for the portion of the project between Gadsden and Turkeytown. The remainder of the undertaking is a 12.5-mile new alignment four lane highway connecting the previously widened sections of US 411.







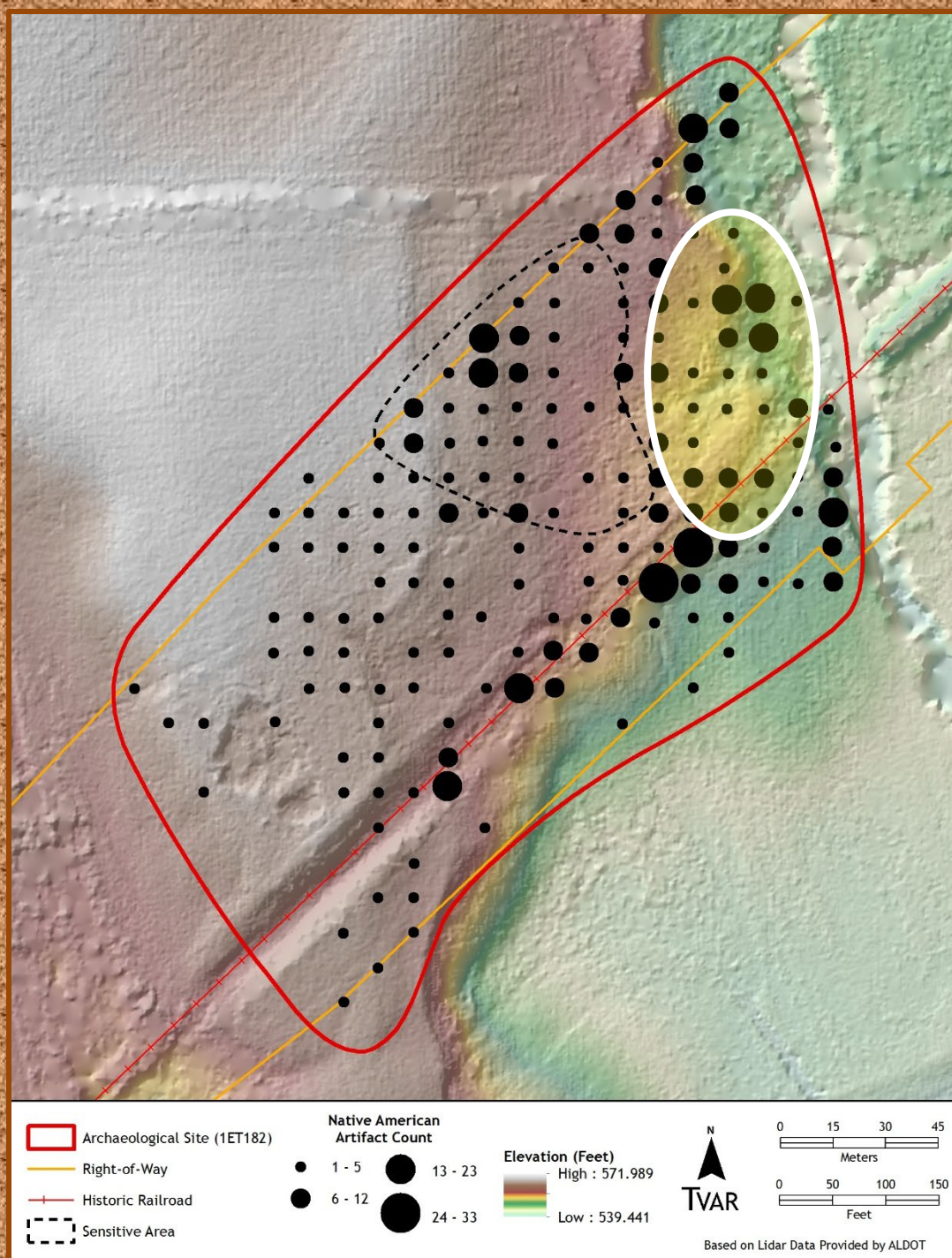
US-411, site 1Et182. Oblique drone view of large karst feature immediately south of project r-o-w limits. Southern r-o-w margin marked by silt fence in background.

Phase I

site delineation within
project r-o-w and
shovel testing results



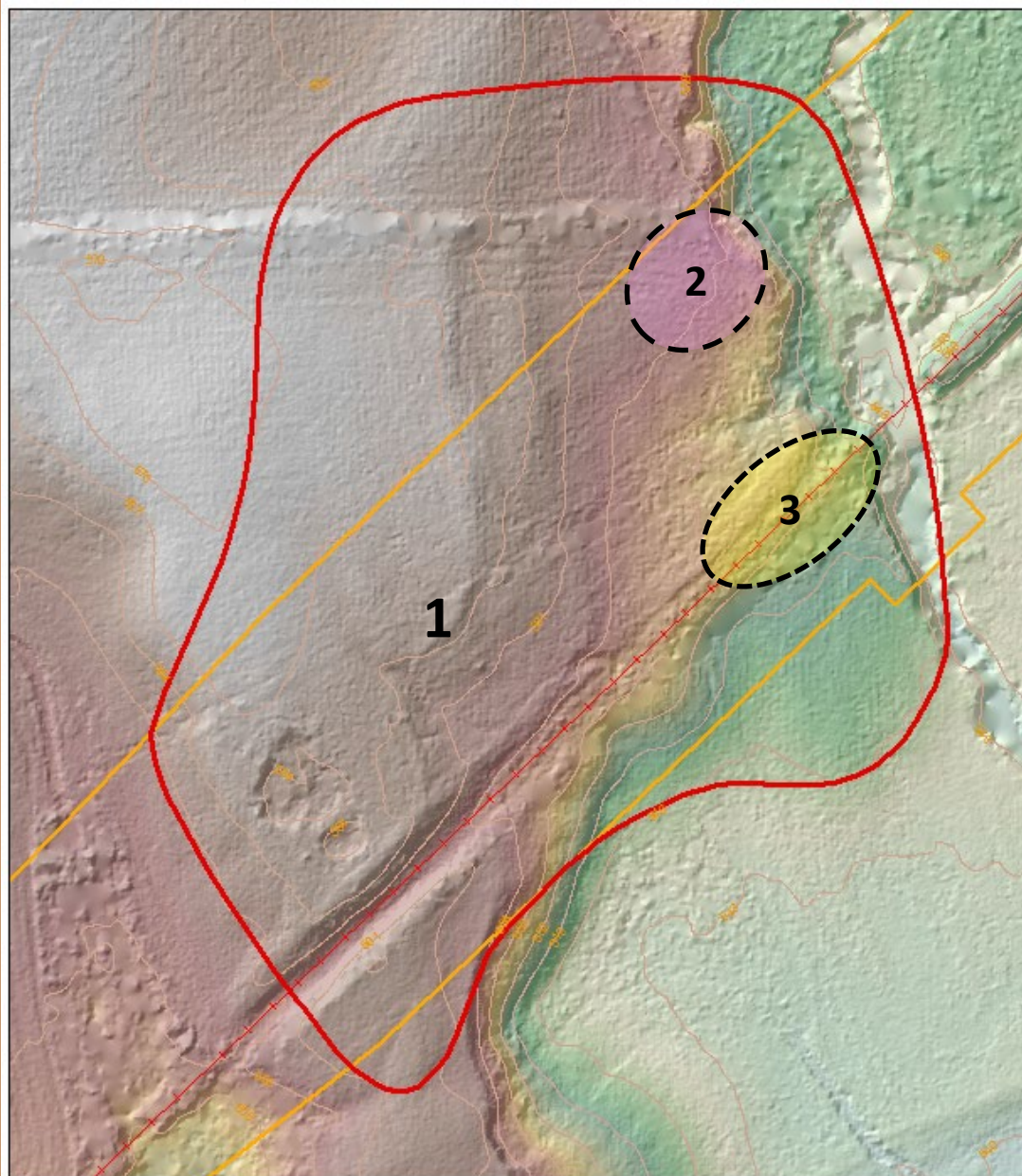
- original site limits



AREA I

There are three site areas with markedly different depositional histories.

The most extensive covers the majority of the site area within the r-o-w and manifests a shallow plow-disturbed topsoil overlying an upland subsoil. The intact cultural features were dug into the subsoil and extend below agricultural impacts. The majority of cultural features within this area date to the Late Woodland period.



- 1ET182 Boundary
- Right-of-Way
- Historic Railroad

Elevation (Feet)
High : 573.208
Low : 539.272



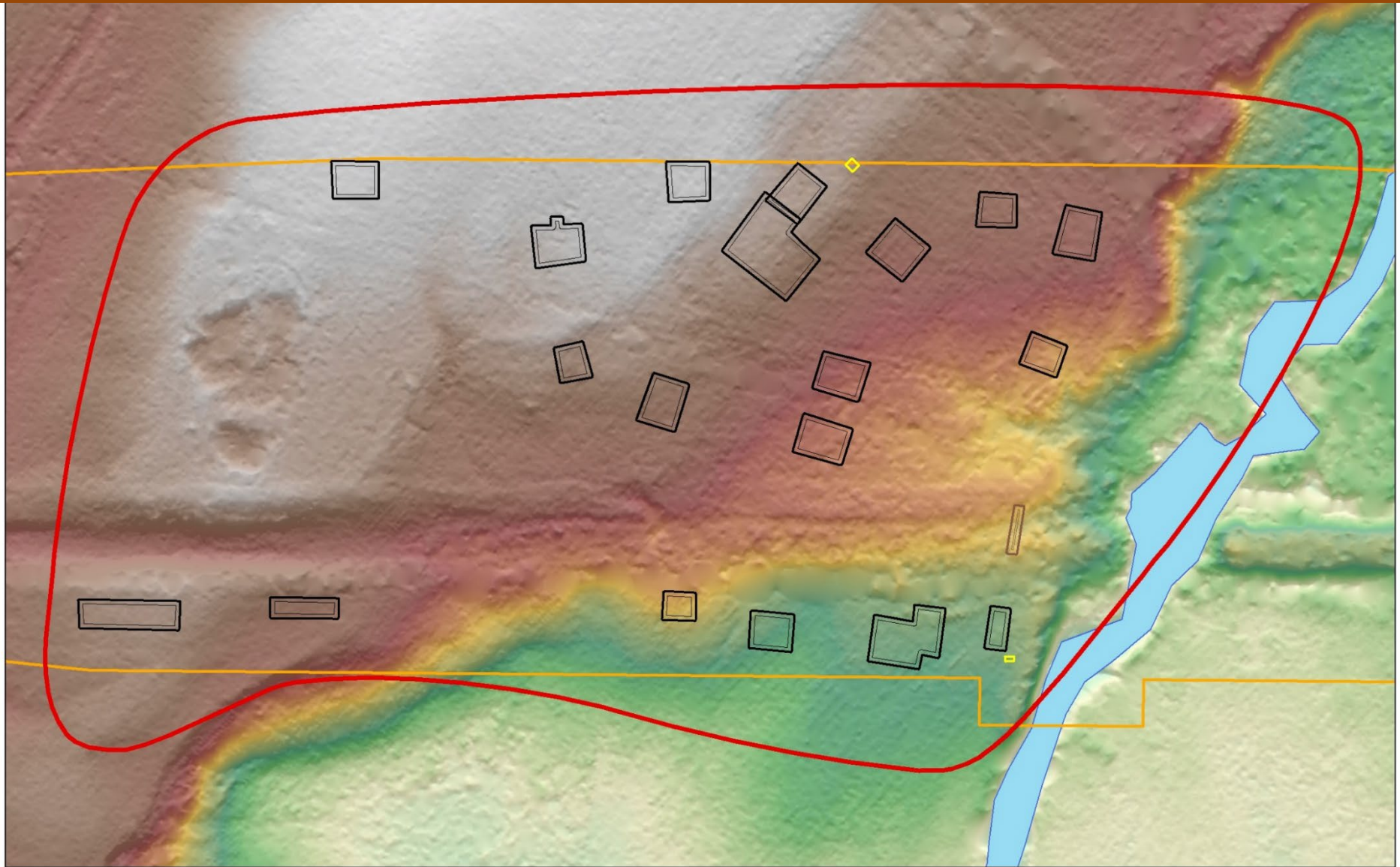
Etowah County, Alabama

An aerial photograph showing a testing site. A large, oval-shaped green field is the central feature. To the left of the field, there is a dirt area with several pieces of equipment, including what looks like a generator or pump, and a small white building. Two dark-colored vehicles are parked on the dirt area to the left of the field. The surrounding landscape is a mix of dry, brownish ground and patches of green grass, with some trees and shrubs scattered around the edges. The view is from a high angle, looking towards the northwest.

US-411, site 1Et182. Early stages of Phase II testing. View to NW.



US-411, site 1Et182. General procedure of mechanical plowzone (Ap) removal to expose subsurface cultural features.



 Archaeological Site (1ET182)


 Test Unit

 Mechanically Stripped Area

 Trench


 Right-of-Way


Elevation (Feet)

 High : 570.686

 Low : 539.458



0 10 20 30

Meters

0 30 60 90

Feet

Based on Lidar Data Provided by ALDOT



US-431, site 1Et182. Drone view of Phase III Data Recovery in progress. Silt fences mark ~ r-o-w boundaries. View to the NE.



US-411, site 1Et182. Phase III Data Recovery site stripping progress. Plow-disturbed sediment removal along north r-o-w margin.





US-411, site 1Et182. Mapping of feature prior to excavation.



US-411, 1Et182. Final feature profile preparation for photo.





0 6 12
cm

US-411, site 1Et182 – Feature 1.

US 411
site 1Et182
Late Woodland
stone tools from
feature
contexts.





US-411, site 1Et182. Profile view, Late Woodland bell-shaped pit (Feature 179)



0 3 6
cm

Partially reconstructed vessel from Feature 179



US 411, site 1Et182. Drone view of Feature 73 showing stratigraphic trench bisecting cultural deposits.

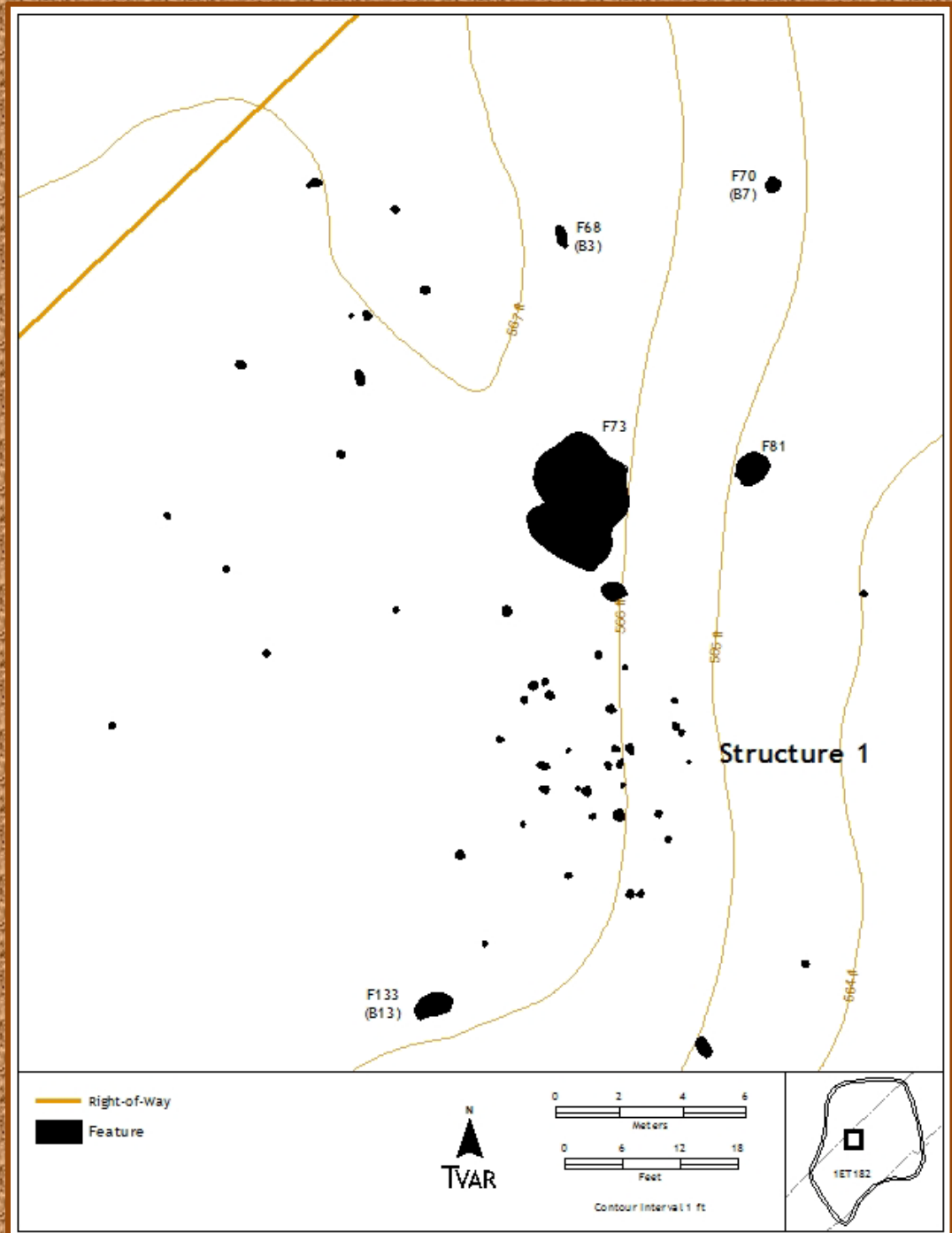


US-411, site 1Et182. South profile of Feature 73 after northern half was excavated.



US-411, 1Et182. Feature profile exposure prior to final stratigraphic excavation.

US-411, site 1Et182 Proximity of Feature 73 to Structure 1





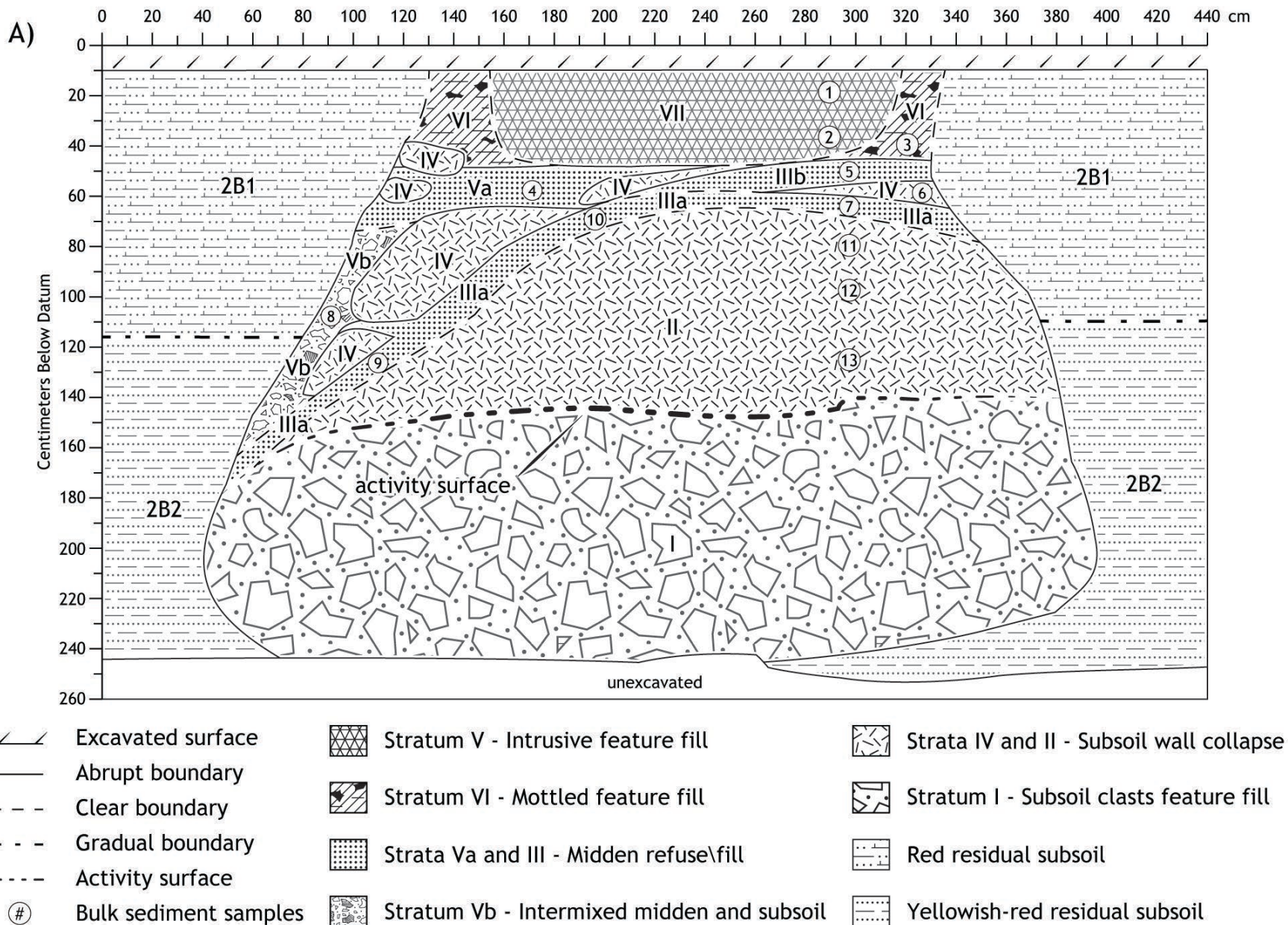
US 411, 1Et182. Drone view of Feature 201 early stages of excavation.



US 411, 1Et182. Profile of Feature 201 during early stages of excavation.



US 411, 1Et182. Profile of Feature 201, first half of feature completely excavated.

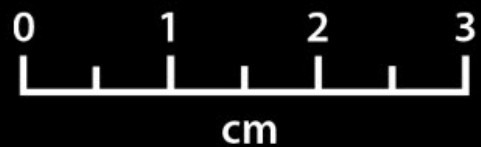


US-411, 1Et182 – Feature 201 profile.



US-411, 1Et182. Possibly a slightly earlier Woodland artifact cluster and associated ceramics

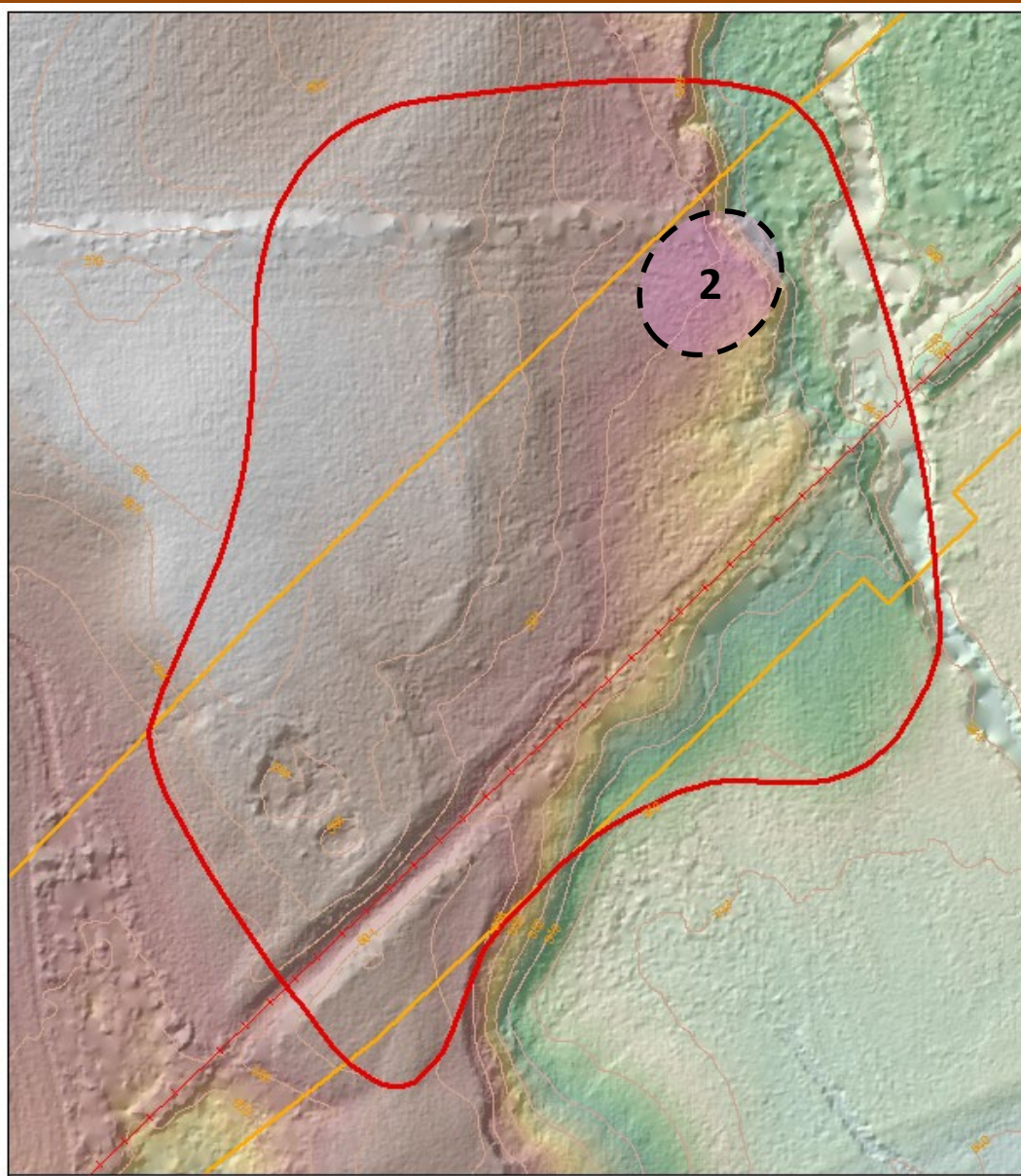




AREA 2

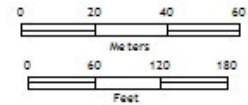
Area 2 is restricted to the ~ NE corner of the project r-o-w and manifests several episodes of overbank and colluvial sediment deposition. This resulted in a far more complex stratigraphic setting containing layered, intact cultural deposits.

Cultural components in this site area are primarily Late Archaic in age.



- 1ET182 Boundary
- Right-of-Way
- Historic Railroad

Elevation (Feet)
High : 573.208
Low : 539.272

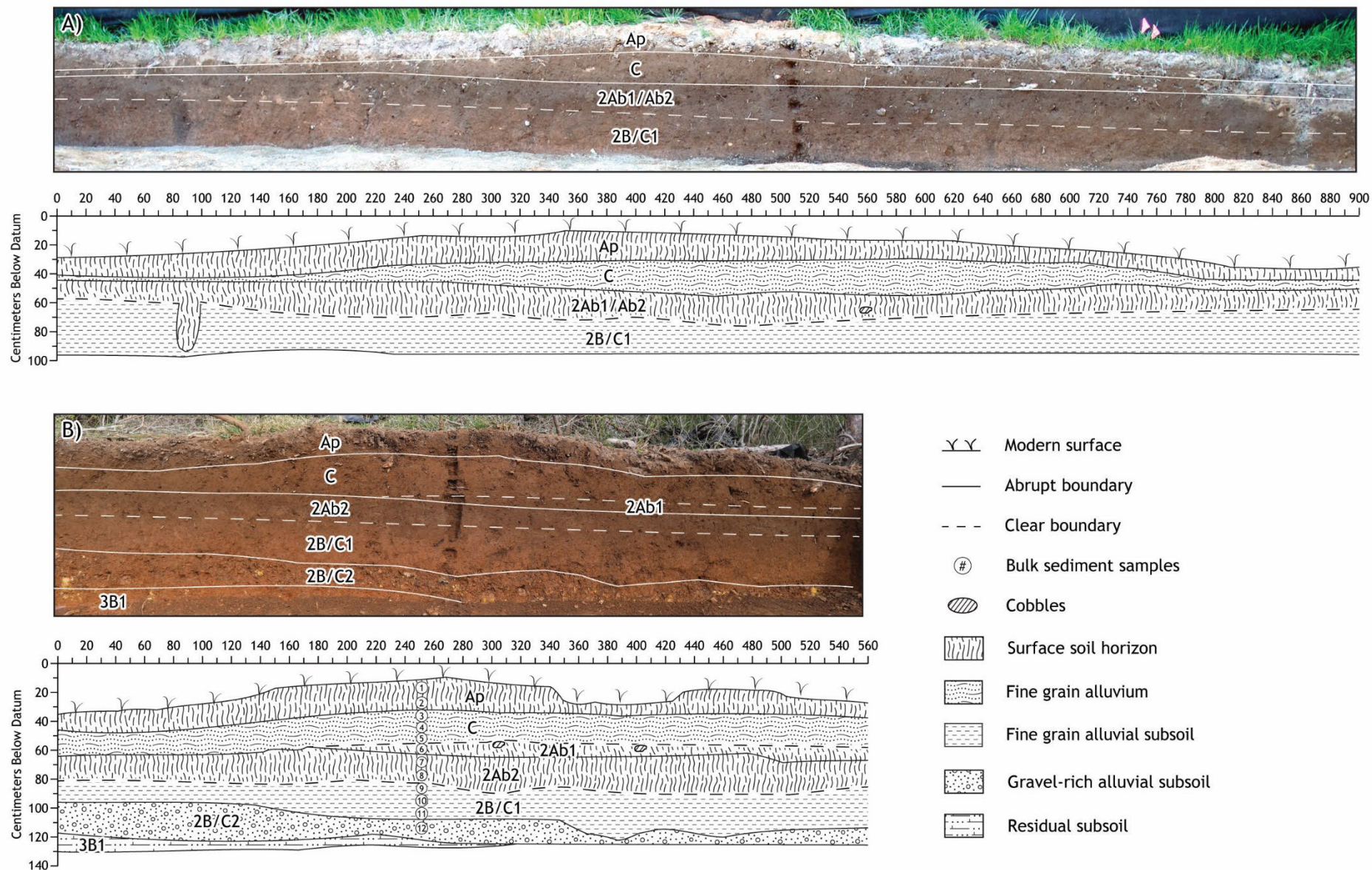


Etowah County, Alabama



US 411, site 1Et182
Late Archaic Pit Features





US-411, site 1Et182. Representative north profiles from NE r-o-w corner.



US-411, site 1Et182. Drone view of Structure 3.



US-411, site 1Et182. Earth oven (Feature 49) associated with Structure 3



US-411, 1Et182. Stratigraphic test trench through center of Structure 3. View to W.



US-411, site 1Et182. North profile of Structure 3 over filled karst feature.

Structure 3

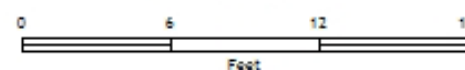
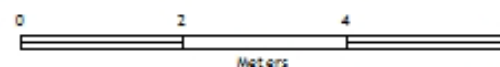
F203

F49

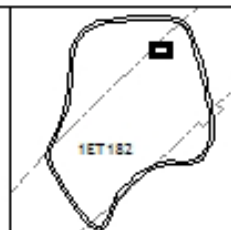
Right-of-Way

Floodplain

Feature



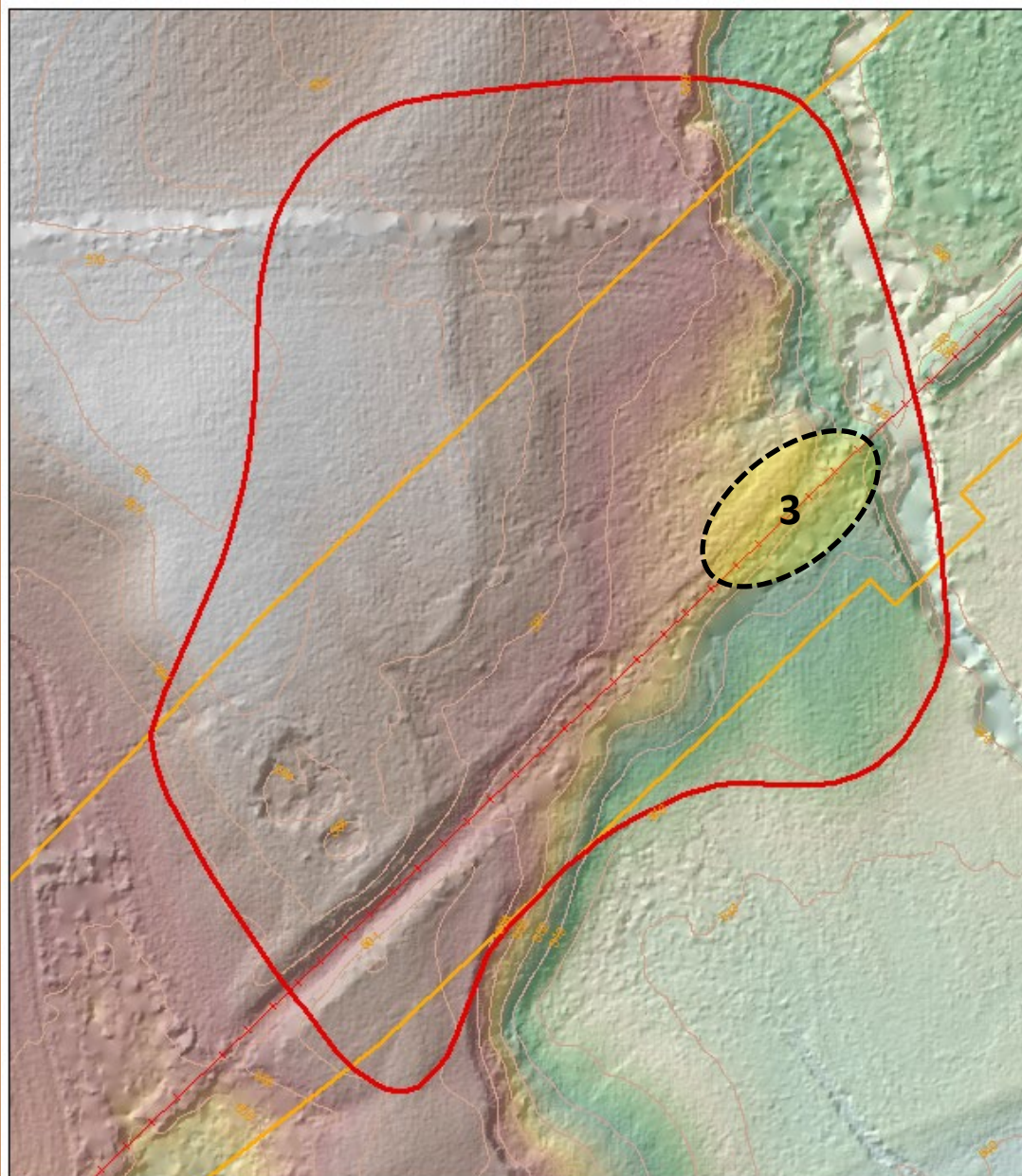
Contour Interval 1 ft



AREA 3

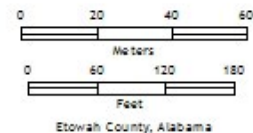
Railroad construction in 1893 differentially affected the site in the southern project r-o-w. The railway was removed in ~ 1950.

Much of the railway within the r-o-w was placed in a deep cut, effectively removing cultural deposits. In contrast, undisturbed archaeological deposits were capped by approach fill placed for bridging the creek.



- 1ET182 Boundary
- Right-of-Way
- Historic Railroad

Elevation (Feet)
High : 573.208
Low : 539.272







US-411, site 1Et182

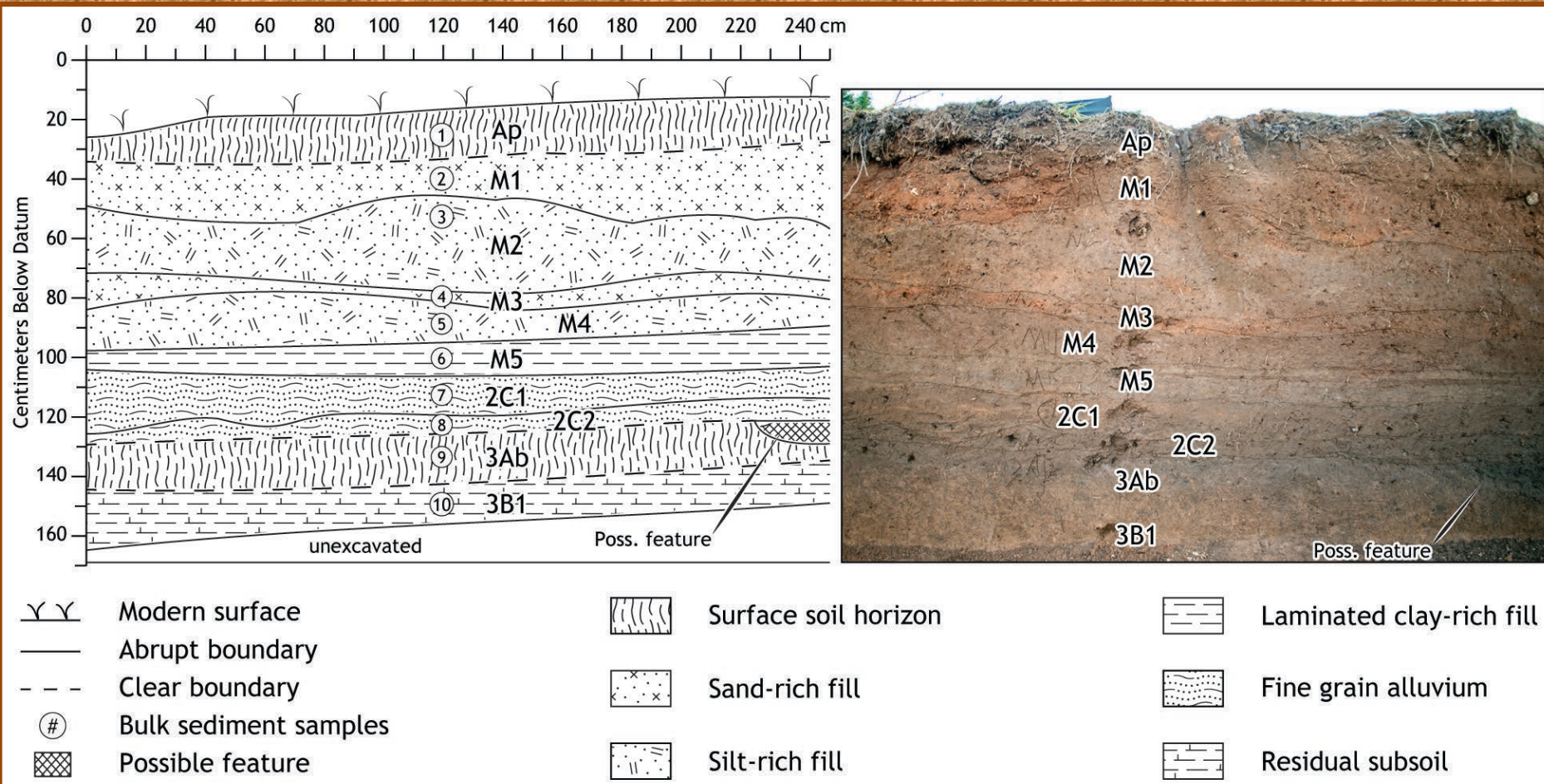
Creek bank profile of railroad bridge fill capping the site.
View to the SE.



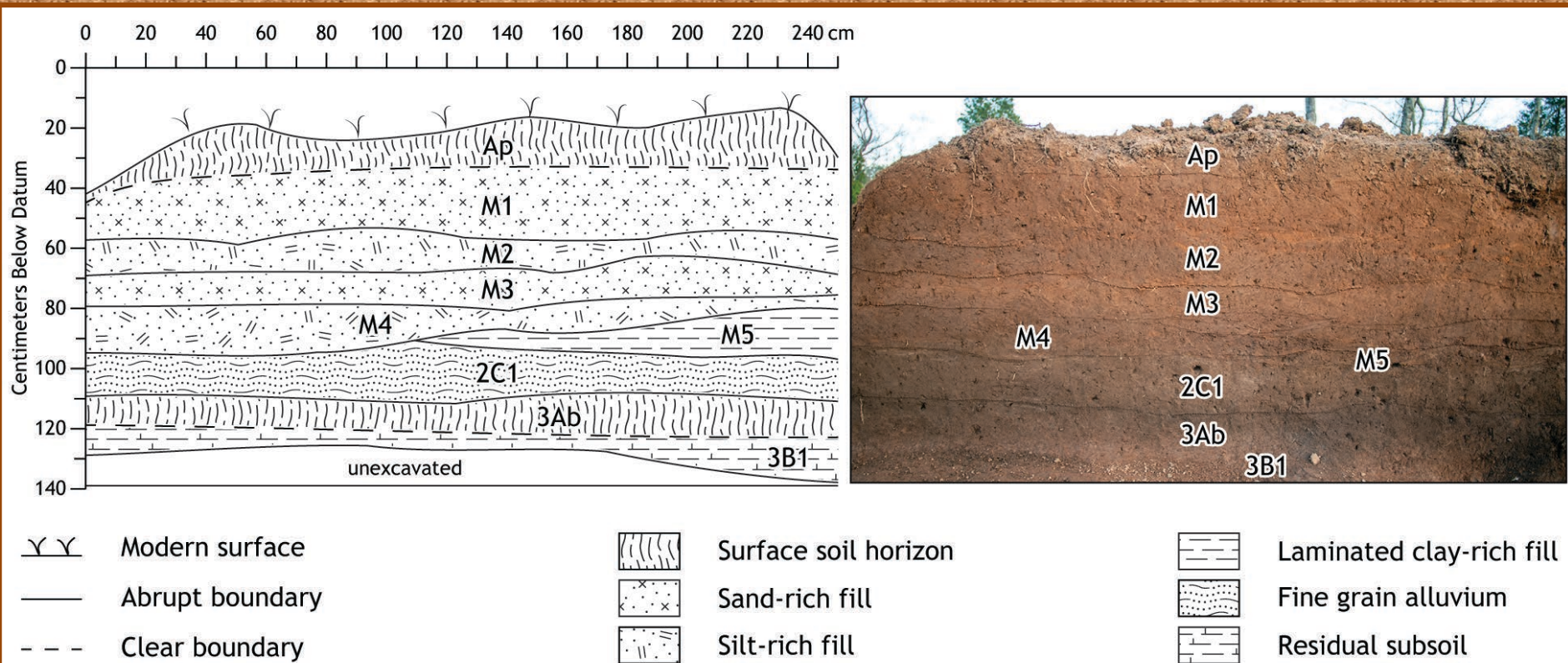
US-411, site 1Et182. Cross section through railroad bridge approach fill.



US-411, site 1Et182. Former rail bed showing location of salvaged cross ties . Looking SE.



US-411, 1Et182. Example of stratigraphic complexity in rail bridge fill.



US-411, 1Et182. Example of stratigraphic complexity in rail bridge fill.



US-411, 1Et182.

Example of features preserved
beneath early historic rail bed
approach fill.



Late Woodland Sites

- Cane Creek Phase Site
- ▣ Coker Ford Phase Site
- Ellis Phase Site

- | | |
|-----------------|------------------|
| (1) Wright Farm | (10) Clear Creek |
| (2) Blue Hole | (11) Kelly |
| (3) Boozer | (12) Dry Creek |
| (4) Bains Gap | (13) 1Ta274 |
| (5) Hog Island | |
| (6) Moneys Road | |
| (7) Coker Ford | |
| (8) Ellis | |
| (9) Dye Creek | |

